



At Aurora, we are committed to providing the fastest delivery of high quality, high spectral purity hollow cathode lamps and other consumable parts at the best available prices. If quality, service and price is important to your lab, call us first.

Hollow Cathode Lamps

We supply more than 70 different hollow cathode lamps of both 37mm (1.5") and 50mm (2") diameter, a variety Deuterium lamps and High Intensity Hollow Cathode Lamps for use with most available spectrometers.

- High Intensity HCL 50mm (2")
- HCL 50mm (2")
- High Intensity HCL 37mm (1.5")
- HCL 37mm (1.5")
- Deuterium Lamp (Background Correction)

High Intensity HCLs

Aurora's unique High Intensity Hollow Cathode Lamps (HIHCLs) overcome the fundamental limitations of standard hollow cathode lamps. In these lamps a secondary discharge is struck between an efficient electron emitter and the anode. The secondary discharge ensures that the majority of the atoms at the face of the cathode are excited and that very few atoms remain in the ground state. This eliminates self-absorption effects and improves both the sensitivity and linearity during analysis.

Furthermore, the line width of these HIHCLs is narrower than those of standard lamps, even at higher current. As a result improved signal to noise ratios are observed.

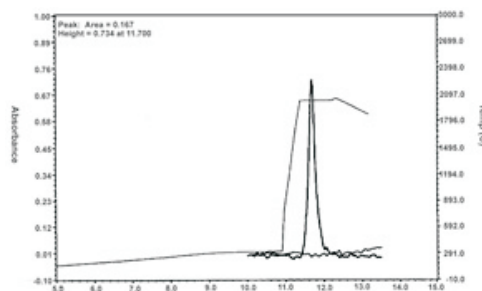
These lamps are compatible with Super Lamp Systems.

Quality

Each HCL is individually tested in our laboratory to ensure its quality and stability. All lamps available from Aurora Instruments feature:

- High purity cathode and fill gases
- Narrow bandwidths
- Unmatched lifetimes
- High stability
- Low Noise

75 ppb as signal using Aurora Instruments' High Intensity Hollow Cathode Lamp.



For North American Sales:
Aurora Biomed Inc.
 email: info@aurorabiomed.com
 website: www.aurorabiomed.com



For International Sales:
Aurora Instruments Ltd.
 email: info@aurora-instr.com
 website: www.aurora-instr.com

Address: 1001 E. Pender St., Vancouver BC Canada V6A 1W2 **Phone:** 1.800.883.2918; 604-215-8700 **Fax:** 604-215-9700

Hollow Cathode Lamp